

SPECIFICATION

PRODUCT NAME: ENTERPRISE 12 USV

BRAND: THOR-ROBOTICS

HULL MATERIAL: BLENDED COMPOSITE MATERIAL

SIZE: 1318*800*507MM (WITHOUT ANTENNA)

HULL WEIGHT: 20KG

TOTAL LOAD: 25KG

WATER WITHDRAWAL: 18KG

DRAFT: 0.15M

MAXIMUM SPEED: 10.8KM/H

RANGE: 20KM

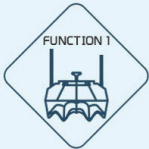
LIFE TIME: 4H

WIND RESISTANCE: LEVEL 3

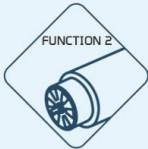
OBSTACLE AVOIDANCE DISTANCE: 7M

REMOTE CONTROL DISTANCE: 1-15KM

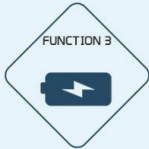
FUNCTION



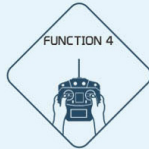
Multi-hull M-shaped linear design



Ducted thruster



Multiple lithium batteries



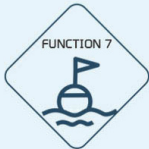
2.4G remote control



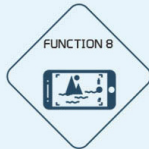
The camera observes the surrounding environment



GPS+ins autonomous navigation system



Obstacle Avoidance System



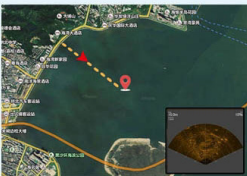
Integrated ground station system, support mobile client (mobile phone, tablet)

SHOW



Wide range of applications, rivers, lakes, reservoirs, coastal waters

Safe operation, operators do not need to get on the ship to avoid risks



Precise navigation technology and depth control servo technology to accurately locate the survey location and survey depth

2.4G digital proportional remote control, manual control of unmanned ship's navigation or ground station (or handheld mobile terminal) to set planned routes and collection mission points, automatic navigation throughout the journey



DETAIL



light



Sidelight



Stickers



GPS



camera



Ducted thruster

REAL SHOT

